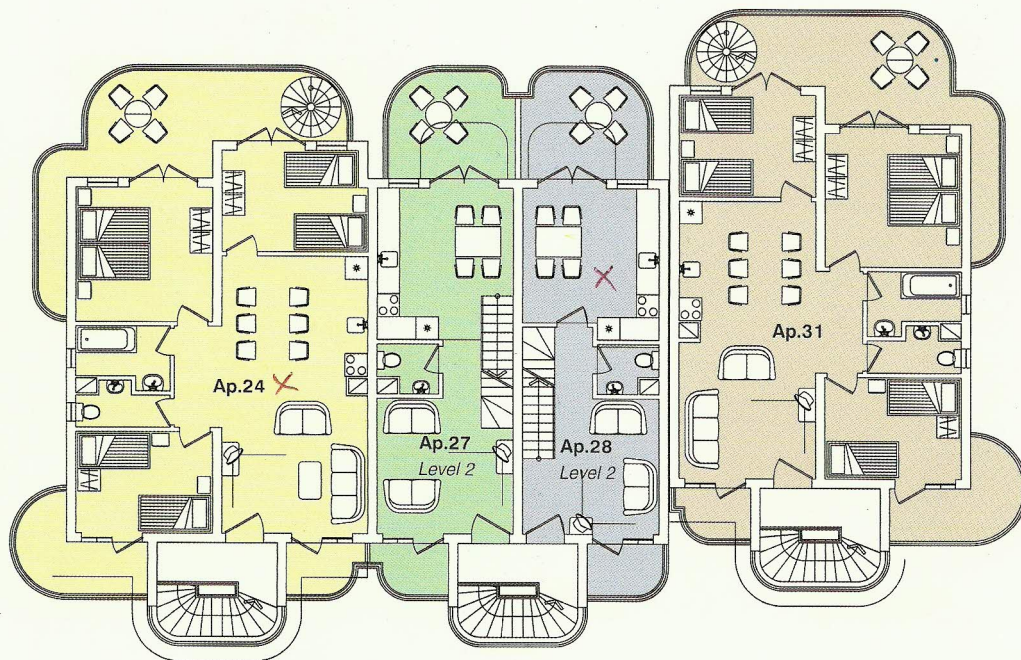
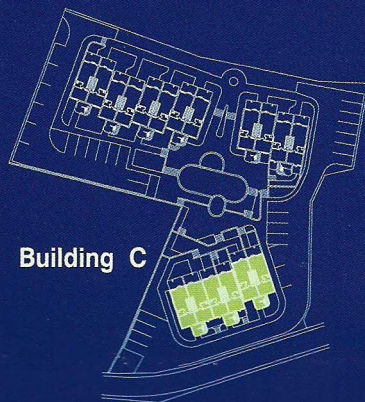


Floor II



Sandy Cove



Building C

Apartment	Living Area	Terrace	Total Living Area
A-24	80.81	67.71	148.52 m ²
Staircase for A-24	-	-	28.89 m ²
A-27	76.70	21.69	98.39 m ²
A-28	76.70	21.90	98.60 m ²
Staircase for A-27 and A-28	-	-	28.89 m ²
A-31	80.81	67.71	148.52 m ²
Staircase for A-31	-	-	28.89 m ²