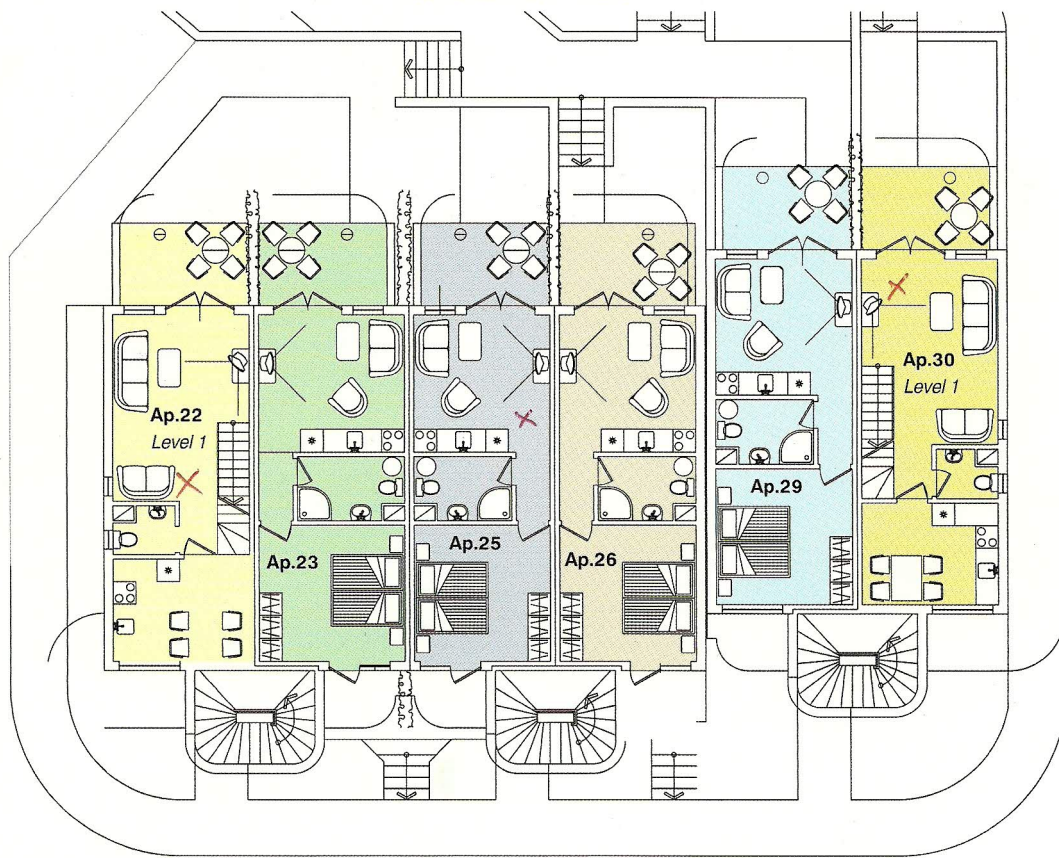
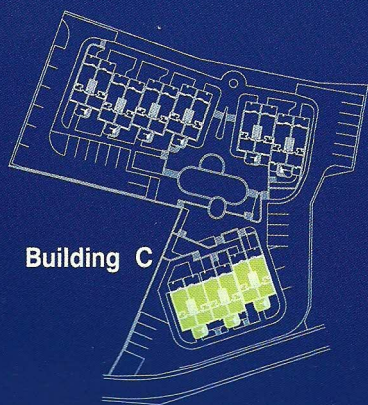


Ground Floor



Sandy Cove



Building C

Apartment	Living Area	Terrace	Total Living Area
A-22	76.70	20.03	96.73 m ²
A-23	39.36	7.92	47.28 m ²
A-25	36.94	7.92	44.86 m ²
A-26	38.14	7.92	46.06 m ²
A-29	38.14	7.92	46.06 m ²
A-30	76.70	16.54	93.24 m ²