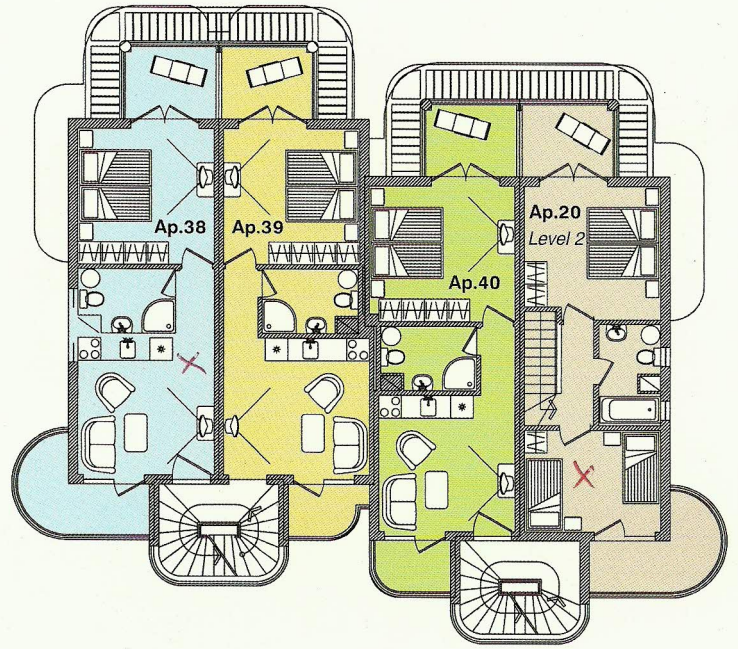
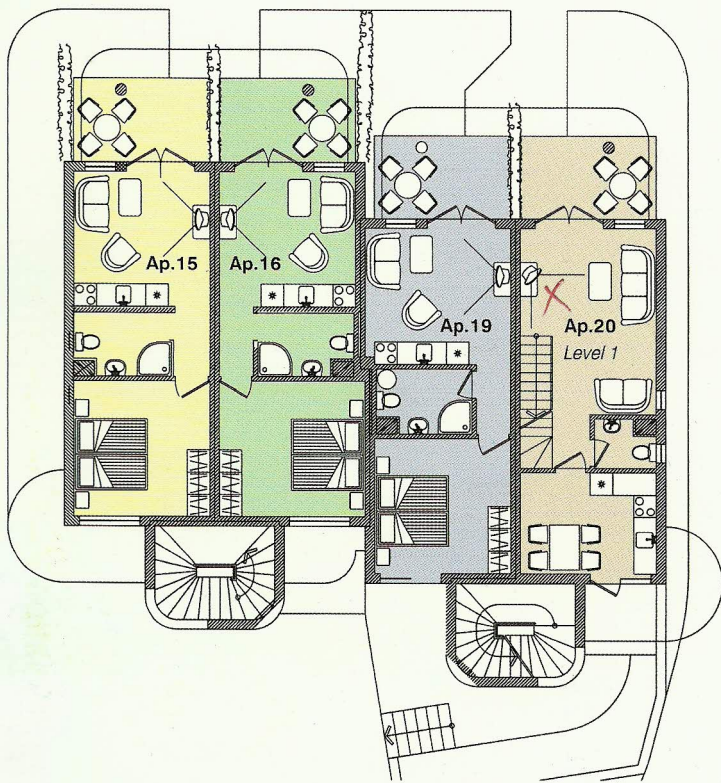
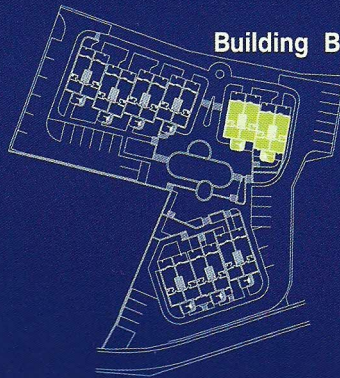


Ground Floor



Floor I

Building B



Sandy
Cove

Apartment	Living Area	Terrace	Total Living Area
A-15	76.70	20.03	96.73 m ²
A-16	76.70	16.13	92.83 m ²
A-19	76.70	20.82	97.52 m ²
A-20	76.70	24.51	101.21 m ²
A-38	38.15	12.30	50.45 m ²
A-39	38.17	8.38	46.55 m ²
A-40	38.12	8.63	46.75 m ²