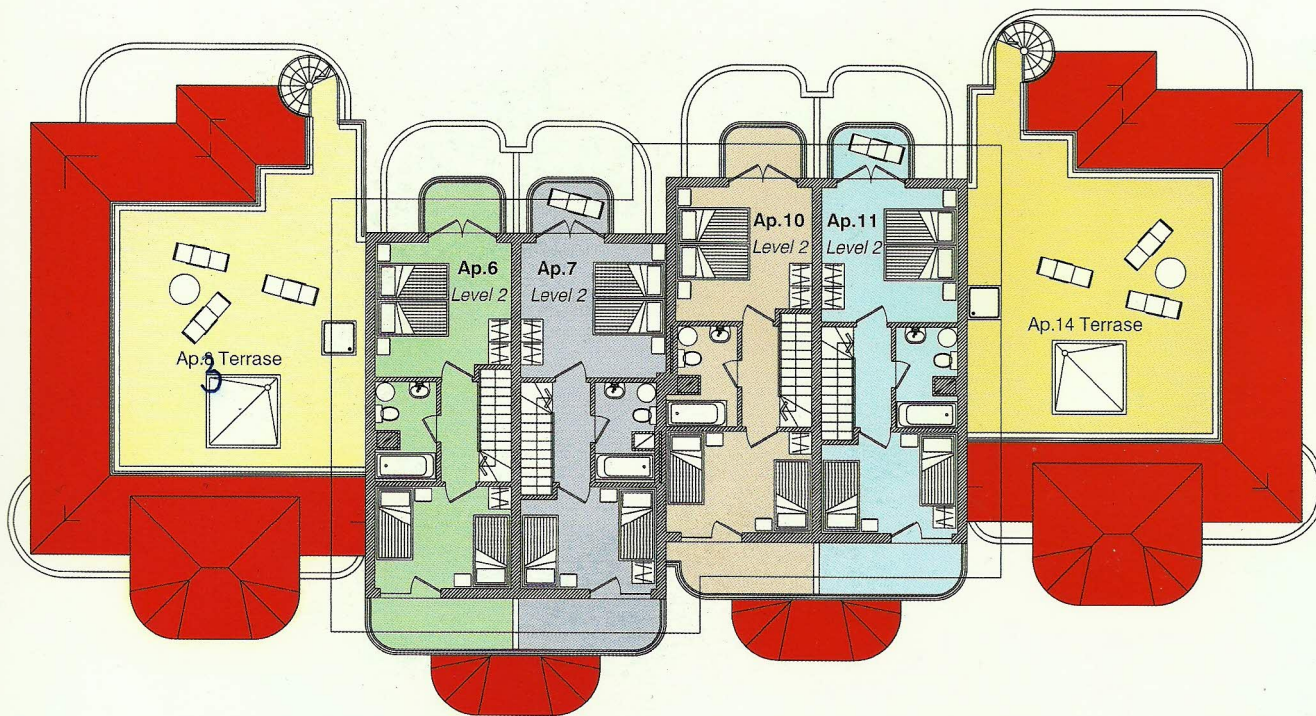
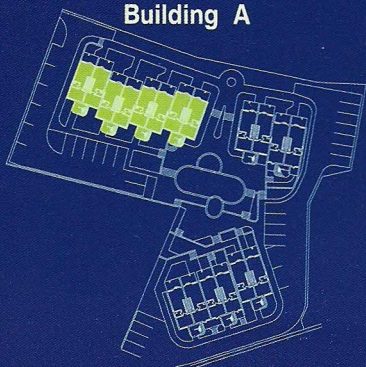


Floor III



Apartment	Living Area	Terrace	Total Living Area
A-8	38.18	7.92	46.10 m ²
Staircase for A-3	-	-	28.89 m ²
A-6	76.70	22.11	98.81 m ²
A-7	76.70	22.11	98.81 m ²
Staircase for A-6 and A-7	-	-	28.89 m ²
A-10	76.70	18.94	95.64 m ²
A-11	76.70	22.11	98.81 m ²
Staircase for A-10 and A-11	-	-	28.89 m ²
A-14	80.81	77.71	158.52 m ²
Staircase for A-14	-	-	28.89 m ²

Building A



Sandy Cove